

Activity Details

Title:	Mission Possible
Submitted by:	Susan Molloy
Subject:	The Catholic Church & its Mission
Grades appropriate:	First -- Fourth
Activity time:	One hour
Objectives:	<ol style="list-style-type: none"> 1. To understand membership in the Catholic Church as belonging to the Mystical Body of Christ 2. To understand the Mission of the Church and their role in that Mission
Description:	<ol style="list-style-type: none"> 1. Read the short description of what it means to be part of the Catholic Church. <ol style="list-style-type: none"> a. Divide into groups to perform the pantomimes. 2. Using the pictures, play the game “One of these things just doesn’t belong.” 3. If time permits, do the Disciples Word Find
Additional Materials:	<p>Catholic Treasure chest (available from Bishop Conlon)</p> <p>The winning team should be allowed to pick one prize from the chest first, then the opposing team. <u><i>(Please, return the treasure chest to Bishop Conlon when finished. We need it for the next Pastoral Visitation. Thank you!)</i></u></p>

How do we show we are Catholic?

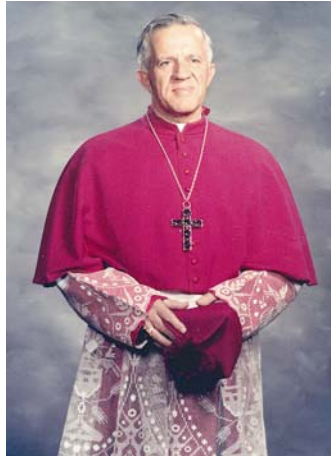
When we talk about belonging to the Catholic Church we are talking about being members of the mystical Body of Christ. When Jesus talked about the temple He would rebuild in three days he was talking about being raised from the dead. Jesus is God's temple as God lives in Jesus and as Catholics we live Jesus as well.

We are also God's temple and others are to see Christ through the way we act. Brainstorm as a group all the ways children show they are followers of Jesus. Now invite the students to perform a mime of those actions that are most reflective of Christ. Then focus on actions that are seen in Church.

- Divide the students into groups and decide which of these they wish to pantomime. They should be as dramatic as possible.
 - Entering the Church and making the sign of the Cross and genuflecting before the tabernacle.
 - A baptism
 - The Sacrament of Holy Communion
 - Ash Wednesday
 - The Sacrament of Reconciliation

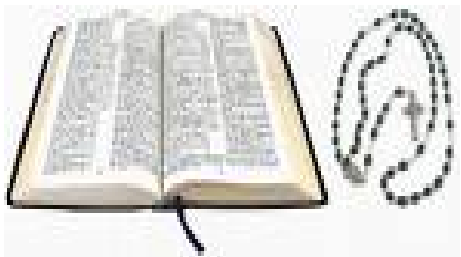
- Another sign that we are members of the one Church is our ability to pray together. Have the students say together:
 - The Our Father
 - The Hail Mary
 - The Glory Be

One of these people just doesn't belong!



1. Who are the people pictured above?
2. What is or was their job?
3. Who does not belong in this group and why?

One of these things just doesn't belong



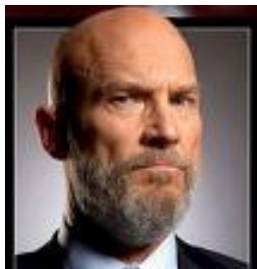
1. What are these pictures about?
2. Where do you find these things?
3. What does not belong in this group and why?

One of these people just doesn't belong!



1. Who are the people pictured above?
2. What did they do in their lives?
3. Who does not belong in this group and why?

Who in this group can never join the Catholic Church? Why?



The Twelve Disciples

Can you find the names of the twelve disciples?

T I Y N A V N S P Q R F G A X
J H P I L I H P A V Q D T U O
U I A U L Q E G C M V I T Z A
D I X D J A M E S E O O J N P
A S F S D K S A M Z I H D Q U
S M M D L E I U A A O R T N Q
J G Q Z M J U O T F E L Z M Y
B Z L A O O B S T W Q Q L D N
X I J H U Q J T H K N U L L J
Y J N X M C S P E I B R B V O
A H T D K G D I W U N E Z Q D
B A R T H O L O M E W T Z G I
W K I G W T T B S O S E P I N
N S U Z S P X N N Y N P S Y G
F V A Y O X T J Y C I F N Y A

Peter
Andrew
James
John

Philip
Thomas
Matthew
Bartholomew

James (the less)
Simon
Thaddeus
Judas

